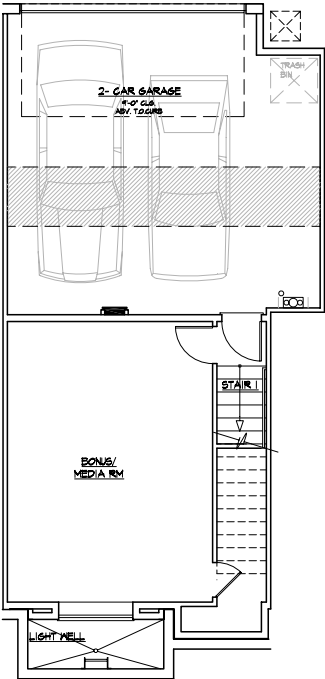


**THE BROWNSTONES**  
 IN DOWNTOWN BOTHELL

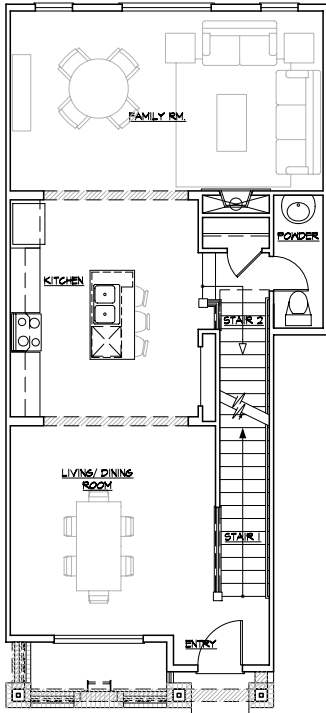


**Blythe**  
 3 Bedroom / 2.5 Bath / Bonus / 2 Car

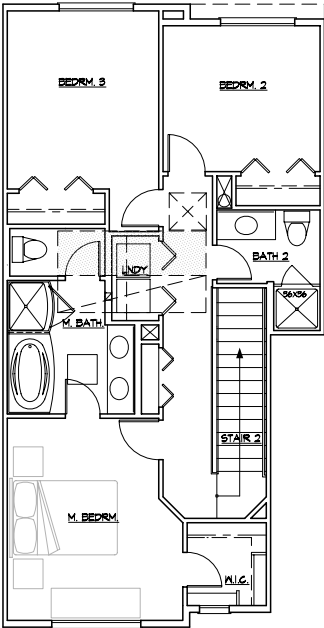
**Blythe**  
 Lower Floor Plan



**Blythe**  
 Main Floor Plan



**Blythe**  
 Upper Floor Plan



camwest.com

**EASTSIDE EXCELLENCE**

The Brownstones in Downtown Bothell are located off NE 185th St on Ross Rd.

Artist's drawings and home plans are shown here for illustrative purposes only. Actual construction of home exteriors and floor plans may vary per homesite. All prospective buyers and selling agents must visit a site sales representative to verify home plans, details and specific homesite information.