

SPRING CREEK

5 Bedroom / 4 Bath / Den / Loft / 3 Car

**PRELIMINARY HOME PLAN
- SUBJECT TO CHANGE**



Vashon (1198-0 A) Cedar Shingles with Stone

Vashon

Vashon Island, 14 miles long and 5 miles wide, is set in the heart of Puget Sound just a short ferry ride to West Seattle, the Kitsap Peninsula or Tacoma. It is also directly accessible to downtown Seattle by a passenger-only ferry. Life in this rural paradise offers something for everyone. The island boasts a flourishing arts community of musicians, writers, painters, potters, glass blowers and more. Outdoor recreation is plentiful from biking to boating. Great blue herons, bald eagles and other birds are often seen here as well as seals, sea lions and the occasional whales and dolphins. A country flavor, a diverse population known for its "can-do" spirit and inspiring natural beauty give Vashon Island a charm all its own.



Vashon (1198-0 B) Lap Siding with Shutters and Brick



camwest.com

Located on Bellevue Wy NE and NE 28th Pl.

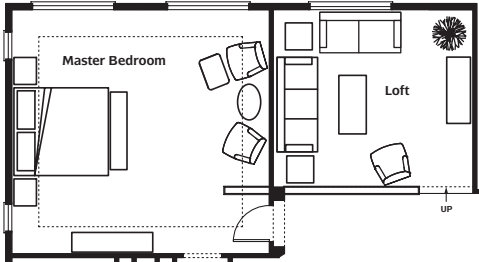
Artist's drawings and home plans are shown here for illustrative purposes only. Actual construction of home exteriors and floor plans may vary per homesite. All prospective buyers and selling agents must visit a site sales representative to verify home plans, details and specific homesite information.

©2008 CamWest Development, Inc.
CamWest Spring Creek LLC, an independent Member of the CamWest Family of Companies

SPRING-CREEK

PRELIMINARY HOME PLAN
- SUBJECT TO CHANGE

5 Bedroom / 4 Bath / Den / Loft / 3 Car

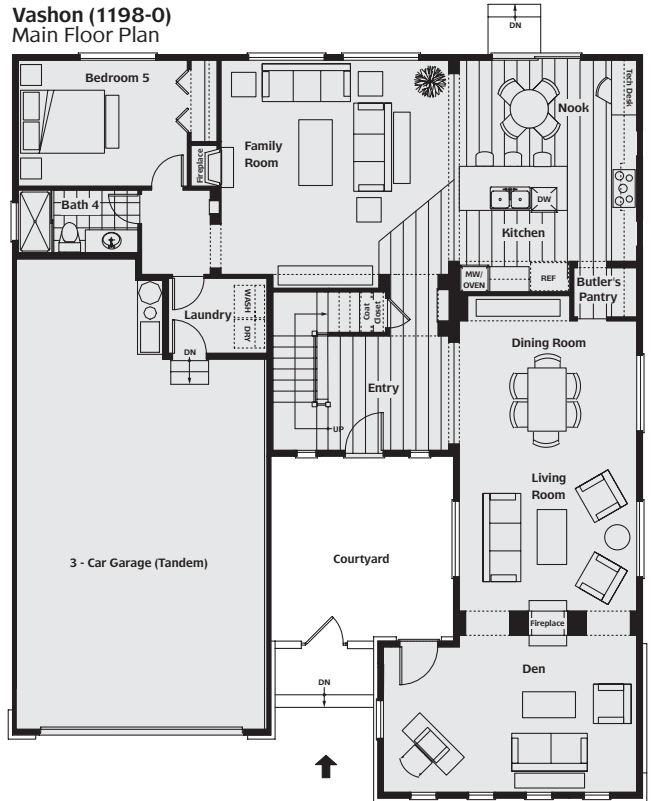


Optional Expanded Master Bedroom
Upper Floor Plan

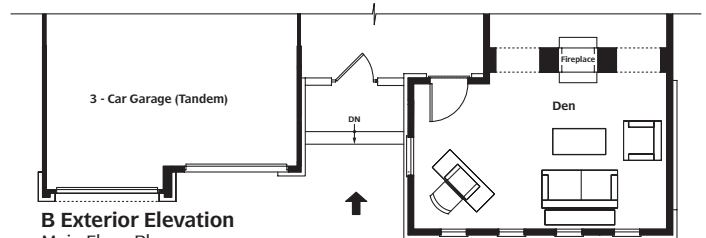
Vashon (1198-0)
Upper Floor Plan



Vashon (1198-0)
Main Floor Plan



B Exterior Elevation
Main Floor Plan



camwest.com

Located on Bellevue Wy NE and NE 28th Pl.

Artist's drawings and home plans are shown here for illustrative purposes only. Actual construction of home exteriors and floor plans may vary per homesite. All prospective buyers and selling agents must visit a site sales representative to verify home plans, details and specific homesite information.