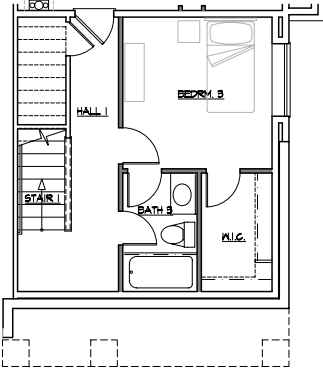


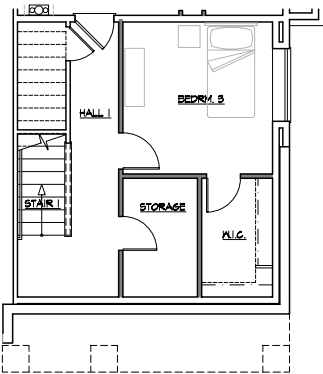

THE BROWNSTONES
 IN DOWNTOWN BOTHELL



Woodin
 2 Bedroom / 2 Bath / Bonus / 2 Car
 (3 Bedroom / 3 Bath Option)

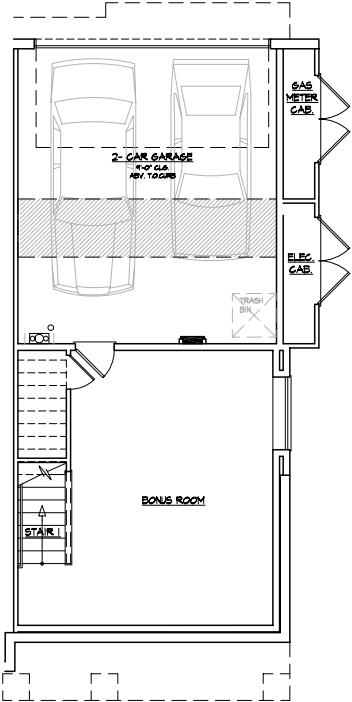


Optional Bedroom 3 and Bath 3 (Lower Floor)

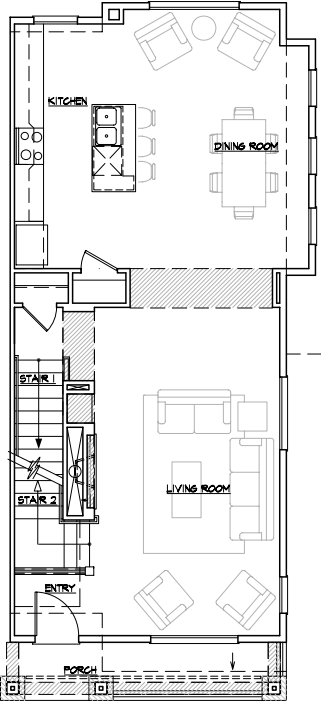


Optional Bedroom 3 (Lower Floor)

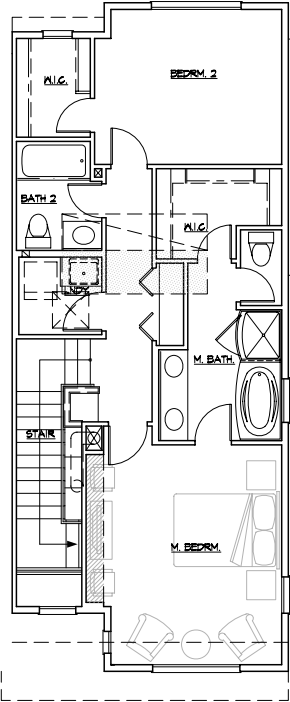
Woodin
 Lower Floor Plan



Woodin
 Main Floor Plan



Woodin
 Upper Floor Plan



camwest.com

EASTSIDE EXCELLENCE

The Brownstones in Downtown Bothell are located off NE 185th St on Ross Rd.

Artist's drawings and home plans are shown here for illustrative purposes only. Actual construction of home exteriors and floor plans may vary per homesite. All prospective buyers and selling agents must visit a site sales representative to verify home plans, details and specific homesite information.