

SPRING CREEK

5 Bedroom / 3.5 Bath / Bonus Down / 4 Car

**PRELIMINARY HOME PLAN
- SUBJECT TO CHANGE**

Summit

The Summit at Snoqualmie, one of the Northwest's favorite and handiest summer and winter playgrounds, consists of four mountains including Summit Central, Summit East, Summit West and Alpental. The first three mountains are referred to as "The Summit" while Alpental is set a couple of miles away on the other side of Interstate 90. Winter adventures at The Summit include nordic and downhill skiing, snowboarding, snowshoeing, snowmobiling and more. In the summer, visitors spend time at The Summit fishing, boating, mountain biking and hiking.



Summit (1157-7 A)
Cedar Shingles with Arched Entry and Stone Accent



Summit (1157-7 B)
Tudor with Brick



camwest.com

Located on Bellevue Wy NE and NE 28th Pl.

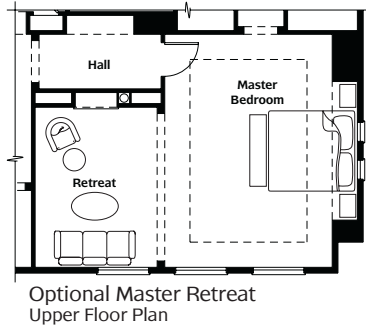
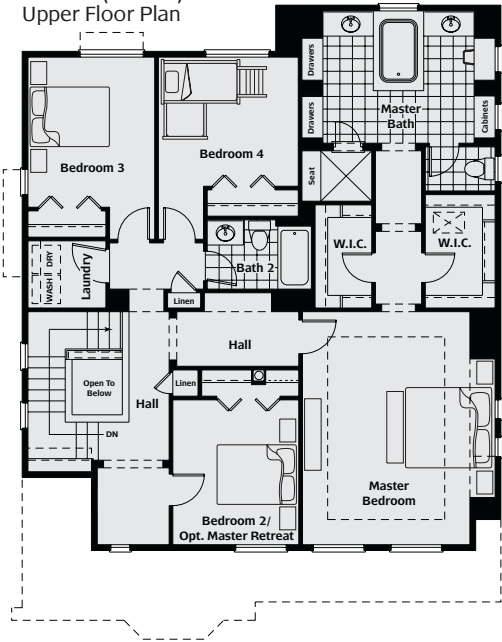
Artist's drawings and home plans are shown here for illustrative purposes only. Actual construction of home exteriors and floor plans may vary per homesite. All prospective buyers and selling agents must visit a site sales representative to verify home plans, details and specific homesite information.

©2008 CamWest Development, Inc.
CamWest Spring Creek LLC, an independent Member of the CamWest Family of Companies

SPRING CREEK

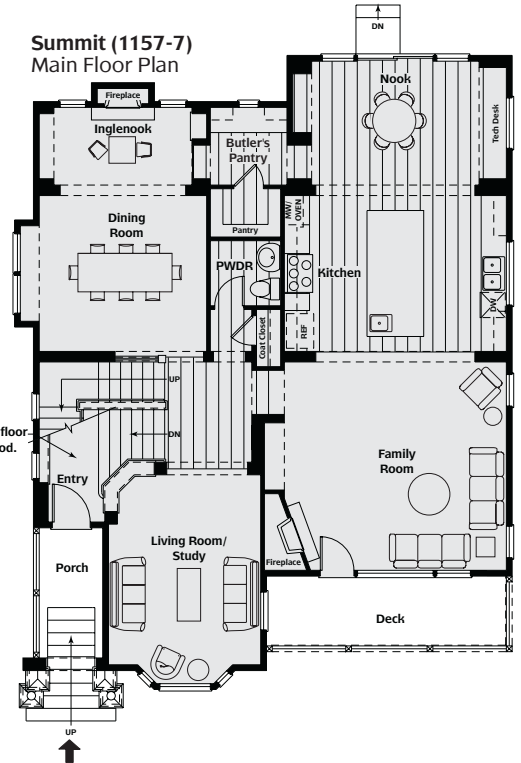
PRELIMINARY HOME PLAN
- SUBJECT TO CHANGE

Summit (1157-7)
Upper Floor Plan

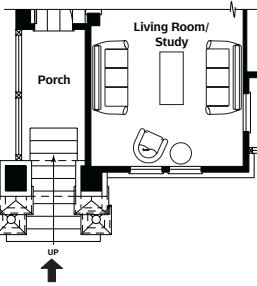
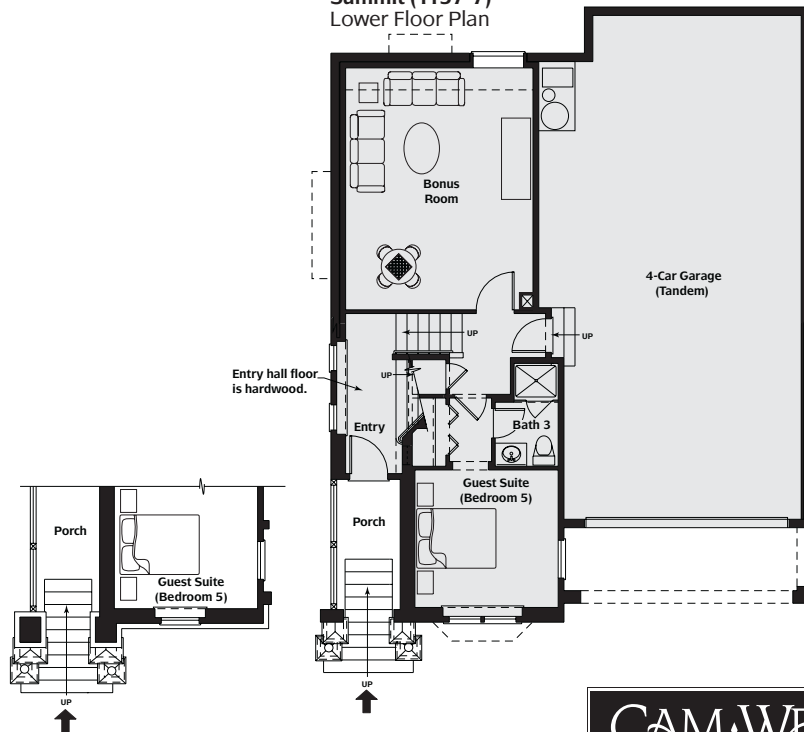


5 Bedroom / 3.5 Bath / Bonus Down / 4 Car

Summit (1157-7)
Main Floor Plan



Summit (1157-7)
Lower Floor Plan



B Exterior Elevation
Main Floor Plan

B Exterior Elevation
Lower Floor Plan



Located on Bellevue Wy NE and NE 28th Pl.

Artist's drawings and home plans are shown here for illustrative purposes only. Actual construction of home exteriors and floor plans may vary per homesite. All prospective buyers and selling agents must visit a site sales representative to verify home plans, details and specific homesite information.