



EASTSIDE EXCELLENCE

Logan

3 Bedroom / 2.5 Bath / 2 Car Garage

Logan (1222-0 A)
Lap Siding with Juliet Balcony



Mount Logan is one of ten non-volcanic peaks over 9,000 feet in Washington State and the fourth highest peak in the North Cascades National Park. It has three glaciers on its flanks, the Fremont, Banded and Douglas. Because Mount Logan is so remote and surrounded by other peaks such as Goode, Storm King, Black and Buckner, it is often climbed on the same trip as these other peaks. The mountain is named for George Logan, a miner with claims and a cabin nearby in the late 1800s, and affords one of the best views in the Cascade range.

Logan (1222-0 B)
Board/Batten with Lap Siding



camwest.com

Artist's drawings and home plans are shown here for illustrative purposes only. Actual construction of home exteriors and floor plans may vary per homesite. All prospective buyers and selling agents must visit a site sales representative to verify home plans, details and specific homesite information.

©2010 CamWest Development LLC



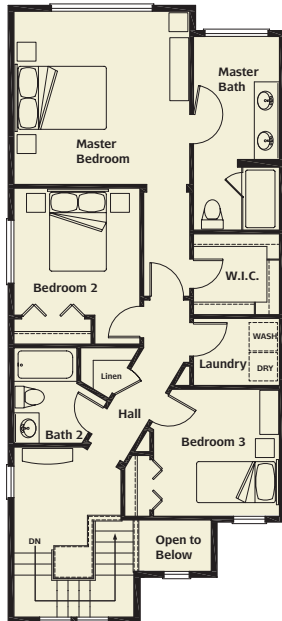


EASTSIDE EXCELLENCE

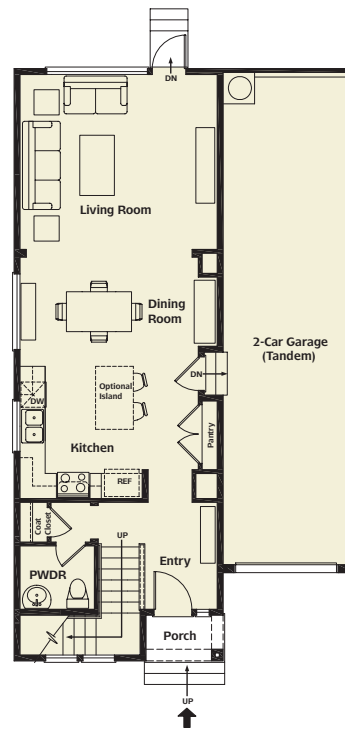
Logan

3 Bedroom / 2.5 Bath / 2 Car Garage

Logan (1222-0)
Upper Floor Plan



Logan (1222-0)
Main Floor Plan



camwest.com

Artist's drawings and home plans are shown here for illustrative purposes only. Actual construction of home exteriors and floor plans may vary per homesite. All prospective buyers and selling agents must visit a site sales representative to verify home plans, details and specific homesite information.

©2010 CamWest Development LLC

