



\$289,950

- New 3-5 Bedroom Homes in Mill Creek
- Select Homesites Back to Lovely Greenbelt
- Minutes to Mill Creek Town Center
- Easy Commute to Seattle & Redmond
- Gorgeous Architecture, Luxurious Light-Filled Interiors

HOMESITE 143

ADDRESS 13920 33rd Drive SE

HOME PLAN Larrabee II (1284-0)

FLOOR PLAN 3 Bedroom / 2.5 Bath / 2 Car

tana lehman

tanal@windermere.com

206.321.7368



camwest.com



Located at 35th Ave SE and 141st St SE in Mill Creek.

Artist's drawings and home plans are shown here for illustrative purposes only. Actual construction of home exteriors and floor plans may vary per homesite. All prospective buyers and selling agents must visit a site sales representative to verify home plans, details and specific homesite information.

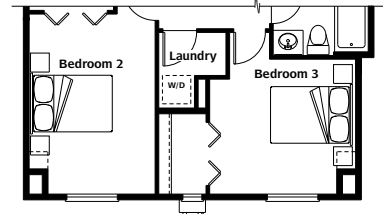
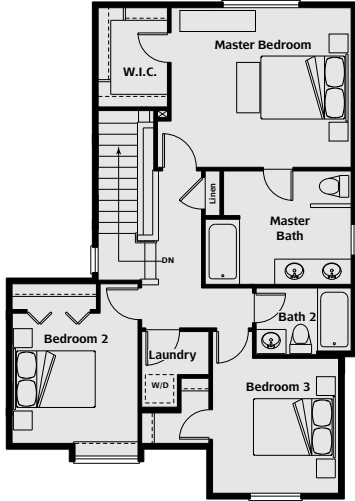
CamWest Northpointe LLC, an Independent Member of the CamWest Family of Companies ©2011 CamWest Development LLC





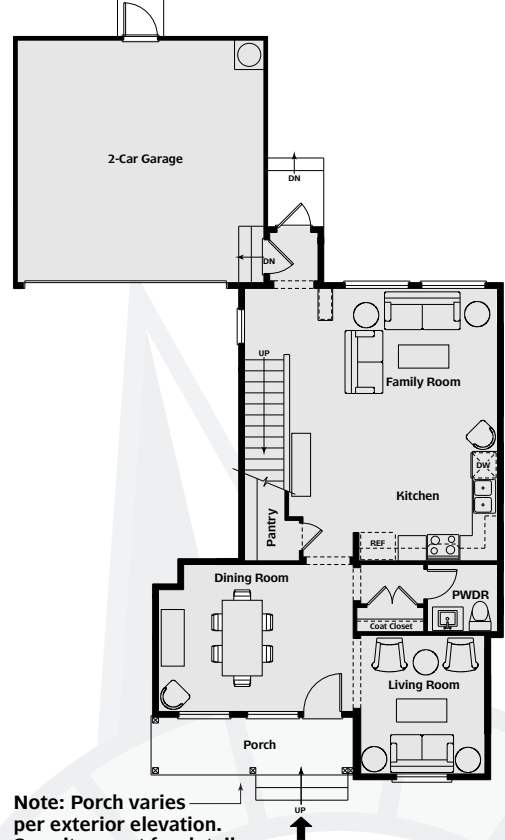
FLOOR PLAN 3 Bedroom / 2.5 Bath / 2 Car

Larrabee II (1284-0)
Upper Floor Plan



B Exterior Elevation
Upper Floor Plan

Larrabee II (1284-0)
Main Floor Plan



Note: Porch varies per exterior elevation. See site agent for details

tana lehman

tanal@windermere.com

206.321.7368



camwest.com



Located at 35th Ave SE and 141st St SE in Mill Creek..

Artist's drawings and home plans are shown here for illustrative purposes only. Actual construction of home exteriors and floor plans may vary per homesite. All prospective buyers and selling agents must visit a site sales representative to verify home plans, details and specific homesite information.

CamWest Northpointe LLC, an Independent Member of the CamWest Family of Companies ©2011 CamWest Development LLC

